



United States
Department of
Agriculture

Forest Service

Northeastern Area
State & Private Forestry

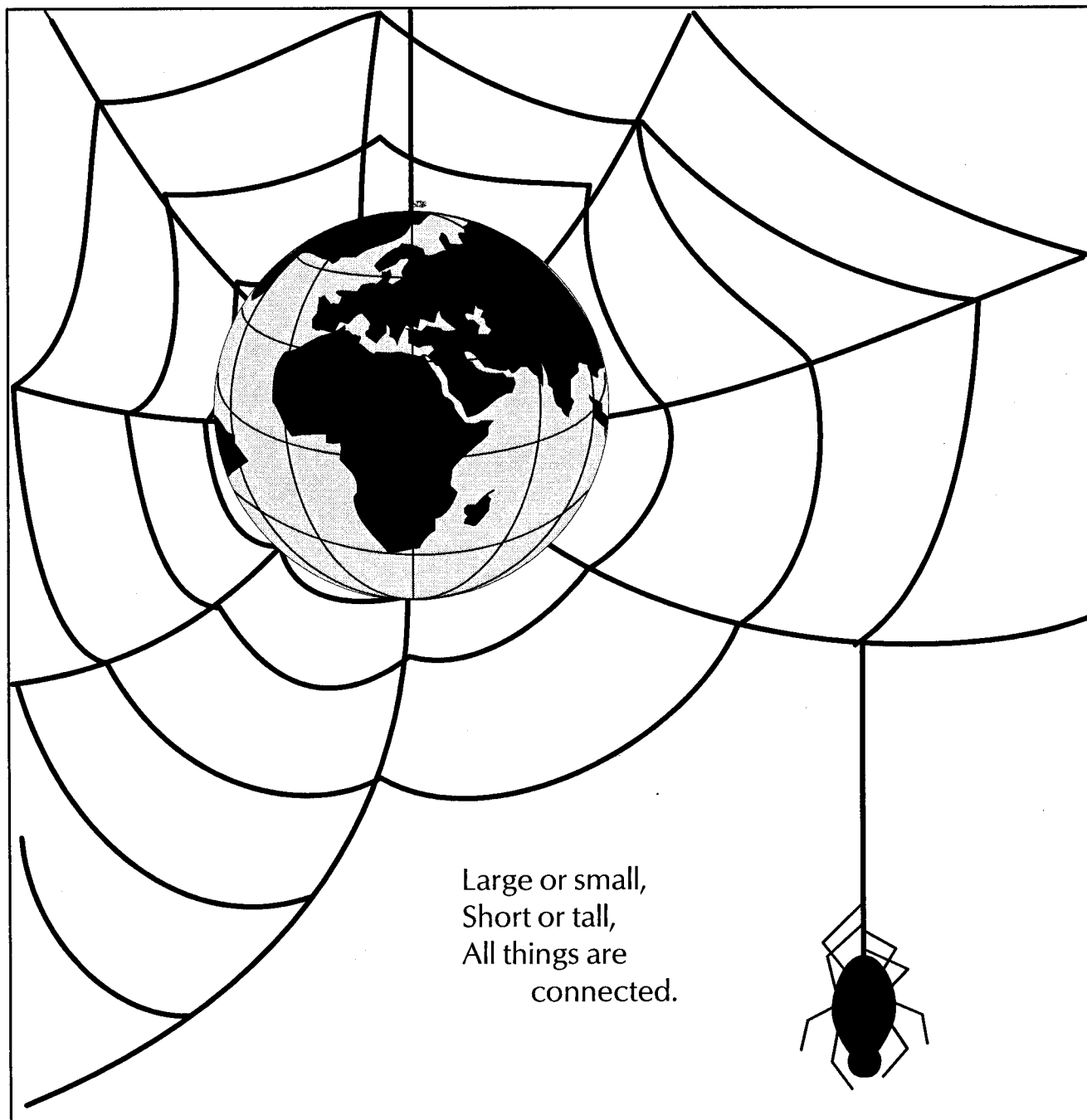
Northeastern Forest
Experiment Station

NE/NA-INF-122-94

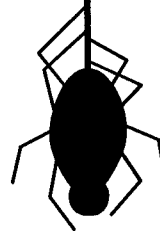


The Web of Life

Activity Booklet



Large or small,
Short or tall,
All things are
connected.

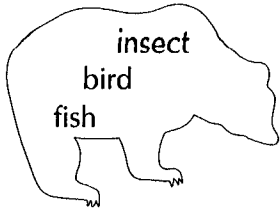


The United States Department of Agriculture (USDA) Forest Service is a diverse organization committed to equal opportunity in employment and program delivery. USDA prohibits discrimination on the basis of race, color, national origin, sex, religion, age, disability, political affiliation and familial status. Persons believing they have been discriminated against should contact the Secretary, U.S. Department of Agriculture, Washington, DC 20250, or call 202-720-7327 (voice), or 202-720-1127 (TTY).

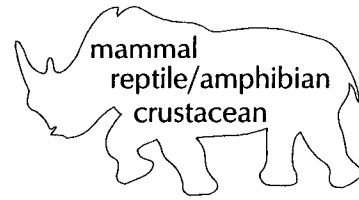
The Web of Life Activity Booklet

This activity booklet was created by Andrea Webster and Rick Henry, both of whom have been interns under the Branching Out To Youth of America Program. Jackie Twiss provided the graphic design throughout the booklet.



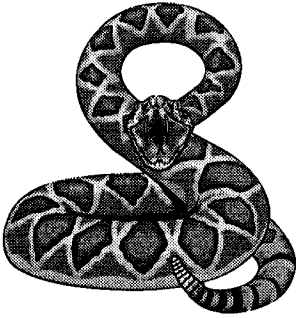


Animals

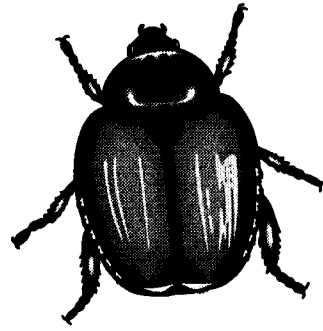


There are many different animal classes. Each class of animals has traits which are specific to their class. See if you can match the animal with the class in which it belongs. Check the glossary if you need help.

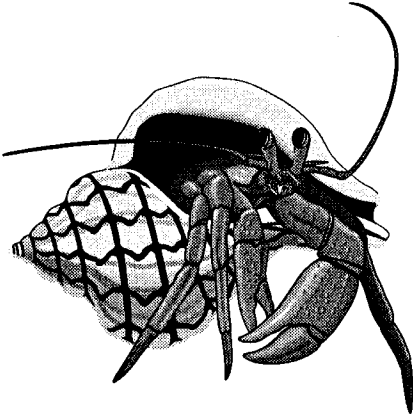
1.



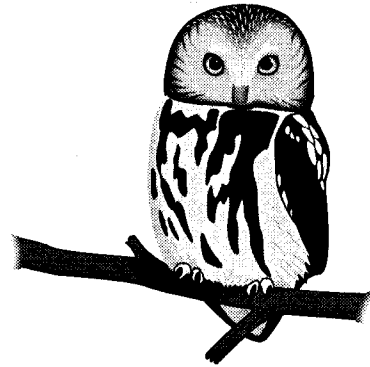
2.



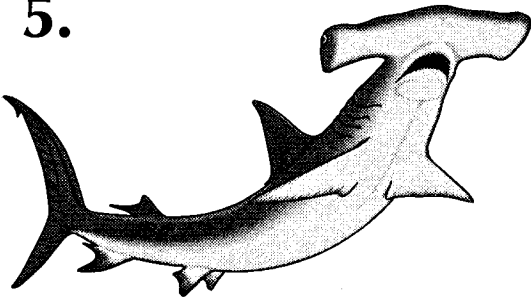
3.



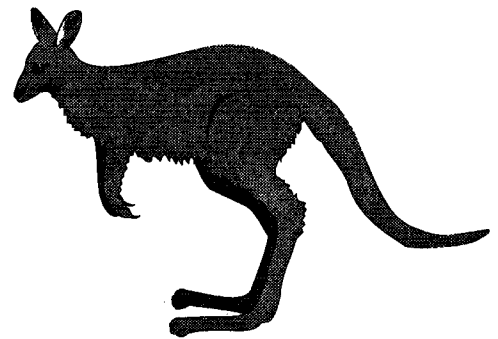
4.



5.

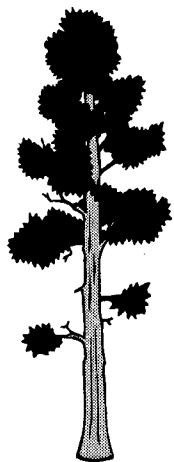


6.



Answers: 1. reptile, 2. insect, 3. crustacean, 4. bird, 5. fish, 6. mammal

Tree ID



How many different types of trees do you know? Test your knowledge and unscramble the letters to find out how many you know.



1. w d o d o o g _____



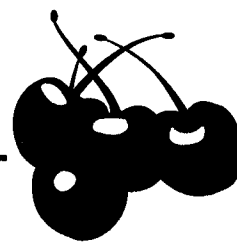
2. l e a m p _____



3. k a o _____

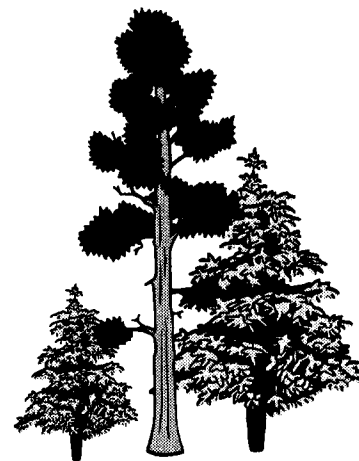


4. r h y r c e _____



5. p s c r e u _____

6. n e p i _____



Make the Connection

The items listed in the two columns need to be connected. Draw a line from Column I to the item that matches it in Column II.

1. tree product

A. smoke

2. pollution

B. writer

3. habitat

C. oil

4. natural resource

D. chewing gum

5. someone who works
in the Forest Service

E. pond

Answers

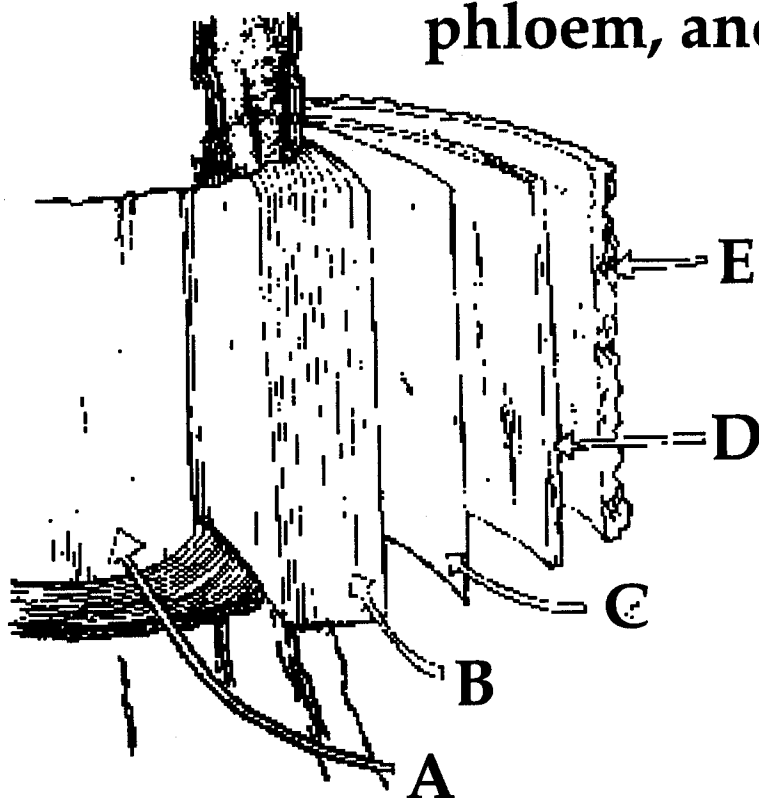
1. Chewing gum is one of many things that come from trees; some other things are: newspaper, some medicine, almonds, and rubber gloves.
2. Smoke (air), soil, water and noise are forms of pollutions.
3. Desert, pond, ocean, marsh, and prairie are types of habitats.
4. Writers, artists, scientists, foresters, and accountants can all work for the Forest Service.
5. Oil, gas, water, trees, soil, people, animals and sunlight are natural resources.

Tree Parts Seek and Find

m	b	r	a	n	c	h	e	s	t	o	o	r
p	k	s	b	t	r	u	n	k	a	e	r	a
h	a	e	r	d	n	a	j	i	p	l	a	k
l	z	e	c	a	s	h	c	v	r	e	o	l
o	b	i	r	w	a	m	y	r	o	t	a	e
e	l	m	k	g	p	m	s	a	o	c	l	a
m	h	r	u	n	w	s	t	c	t	w	i	v
o	a	k	c	w	o	a	e	o	r	t	n	e
b	f	g	d	o	o	w	t	r	a	e	h	s
x	j	e	t	q	d	m	u	i	b	m	a	c
m	l	a	t	e	r	a	l	r	o	o	t	s

- bark**
- branches**
- cambium**
- crown**
- heartwood**
- lateral roots**
- leaves**
- phloem**
- root**
- sapwood**
- taproot**
- trunk**

Label the Parts: heartwood, sapwood, cambium, phloem, and bark.



A. _____

B. _____

C. _____

D. _____

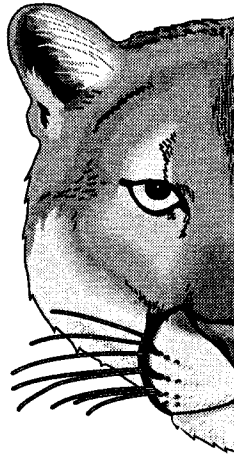
E. _____

Draw the other half of the objects below.
See how creative you can be.

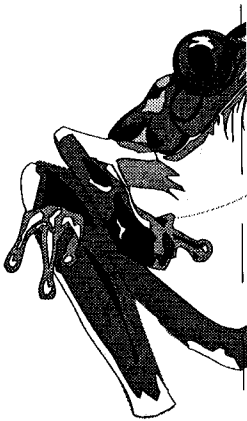
1. Tree



2. Mountain Lion
(Panther)



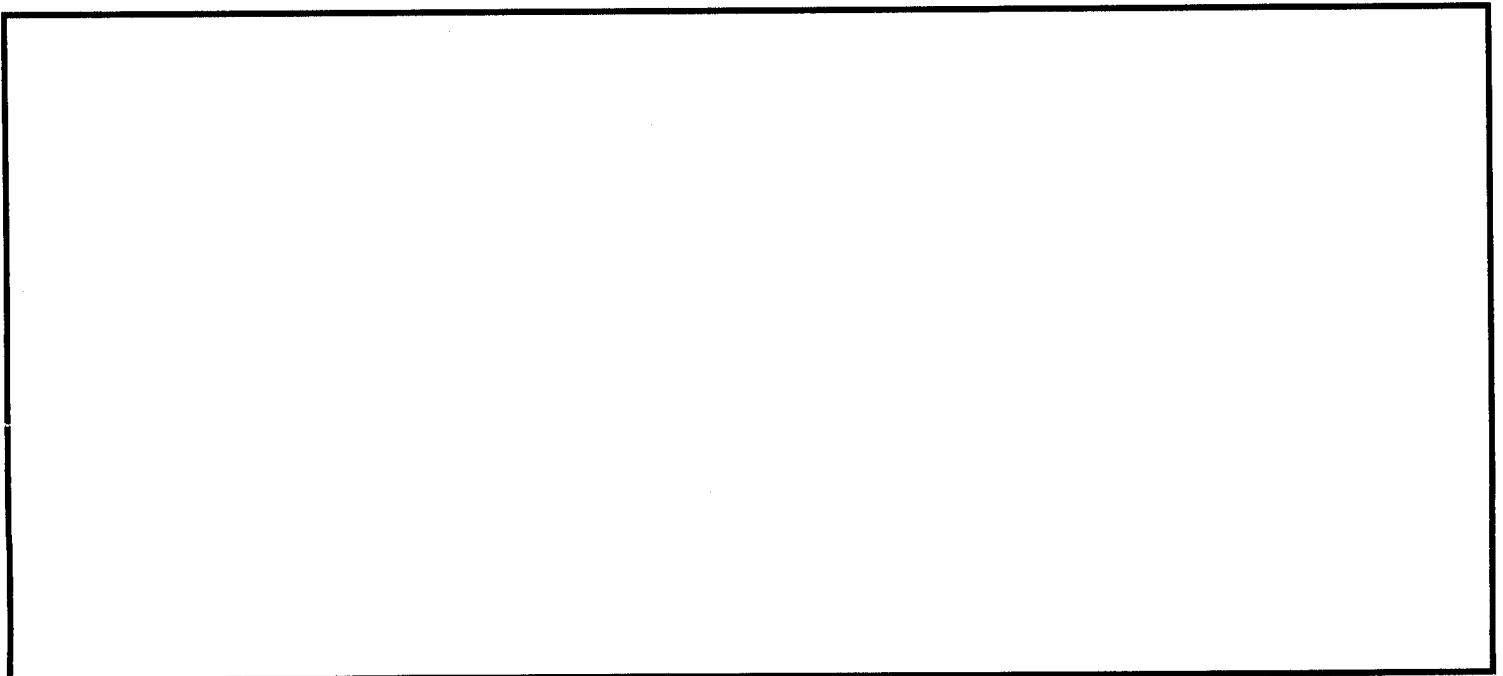
3. Bullfrog



4. Fox



In the box below, create a place where one or all of the living things above could live.

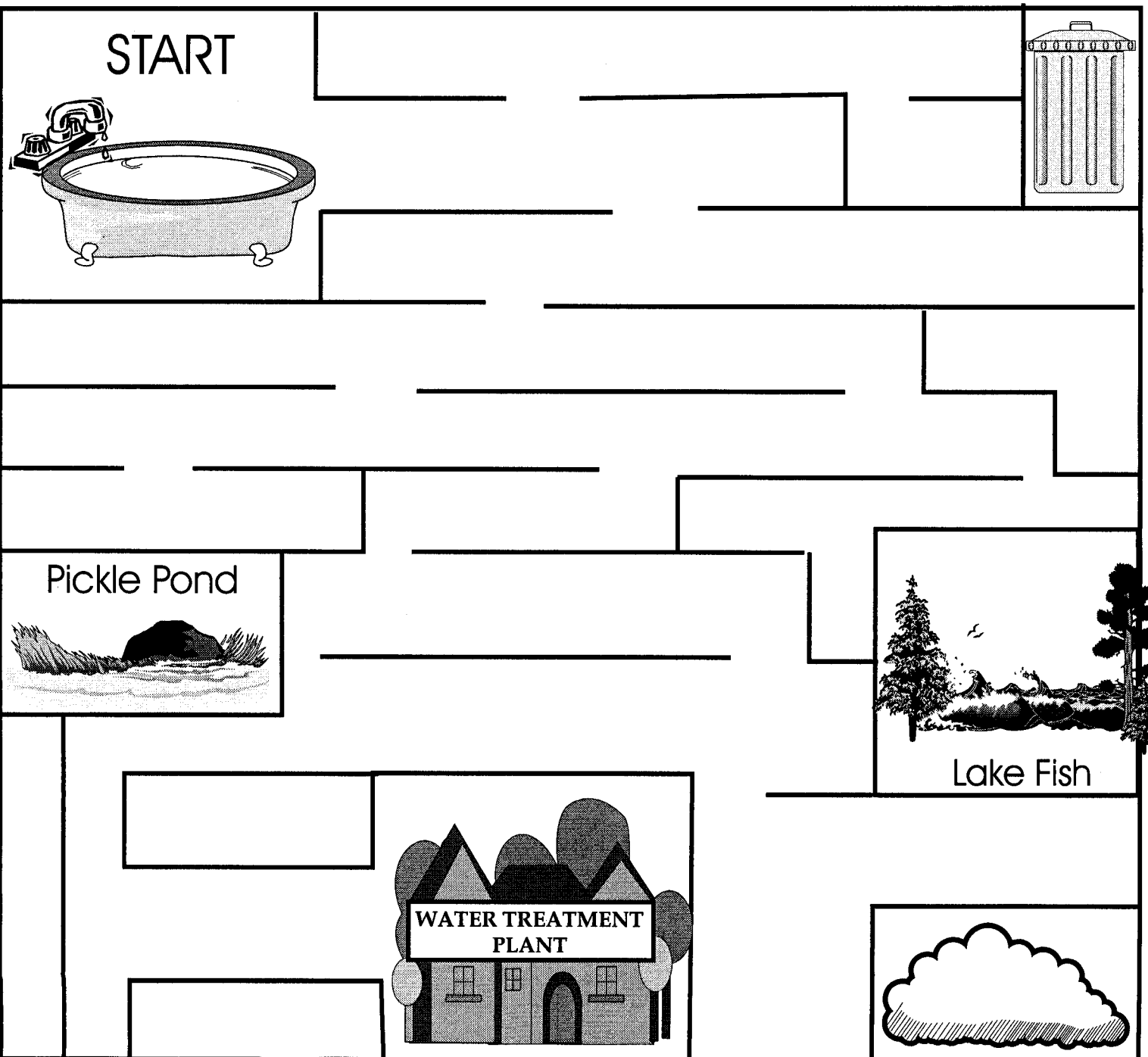


Where Did The Water Go?

Do you ever wonder where your drinking, cooking and bathing water comes from? Even more so, where does it go after it leaves your eyesight and heads down the drain? Drinking, bathing and even sewer water begins an endless journey back to the waste water treatment plant where it gets recycled.

Where does the water treatment facility get its water? Rivers and other bodies of water make up the water distributed by the plant to its customers. Once the water leaves your home, it undergoes several procedures which make it clean and safe to use again.

Four-year-old Fran just finished taking a bath. Fran sees the water go down the drain but doesn't know where it goes. Can you help Fran find out where her bathwater goes?



Woodsy's Word



What does Woodsy Owl say?
Solve the math problems using addition, subtraction, multiplication and division. After solving the problems, use the decoder box to fill in the letter that corresponds to the answer you found.

Decoder Key

A = 1	N = 22
B = 8	O = 4
C = 11	P = 7
D = 16	Q = 15
E = 2	R = 26
F = 19	S = 25
G = 9	T = 20
H = 21	U = 5
I = 3	V = 23
J = 24	W = 6
K = 13	X = 12
L = 10	Y = 18
M = 17	Z = 14

$$\overline{30-15+3-9=}$$

$$\overline{60 \div 20 =}$$

$$\overline{100 \div 2-27=}$$

$$\overline{69+11+20 \div 50=}$$

$$\overline{8 \times 8 \div 4-15=}$$

$$\overline{24 \div 2+9=}$$

$$\overline{5 \times 4-12-4=}$$

$$\overline{8 \times 4-12 \div 5=}$$

$$\overline{10 \div 2 \times 5-5=}$$

$$\overline{72 \div 12+10=}$$

$$\overline{16+37-45-4=}$$

$$\overline{44 \times 2-66=}$$

$$\overline{200 \div 50 \times 4+4=}$$

$$\overline{7 \times 3-14=}$$

$$\overline{6+8+10 \div 6=}$$

$$\overline{100 \div 10=}$$

$$\overline{2 \times 4+2=}$$

$$\overline{24+1 \div 5=}$$

$$\overline{39+6-25=}$$

$$\overline{15+3 \div 9=}$$

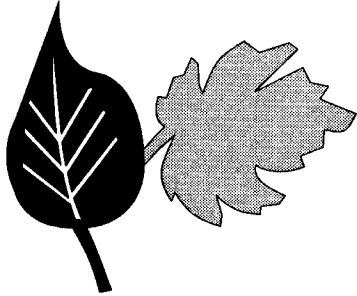


Scavenger Hunt

See if you can find everything on the list!
Look at the playground, a parking lot, or
your own backyard.

Collect these:

A leaf that has fallen



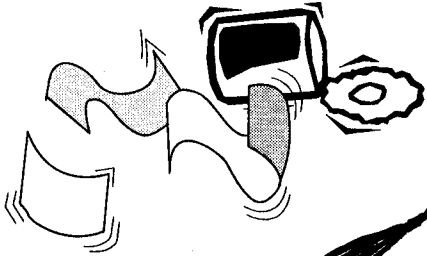
A rock with two colors



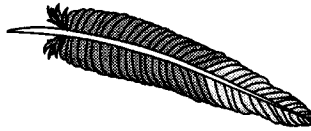
A seed



Three different types of litter
(example: paper, plastic, aluminum)



A feather



A pine needle

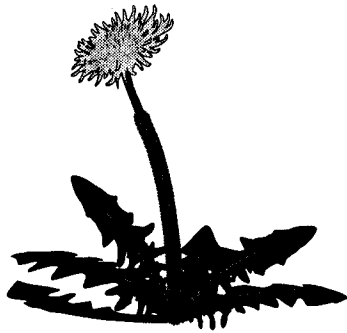


A small branch that has fallen

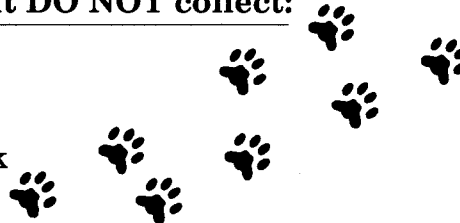


Find these, but DO NOT collect:

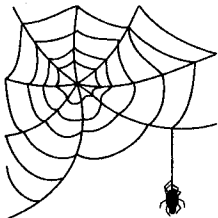
A flower



An animal track



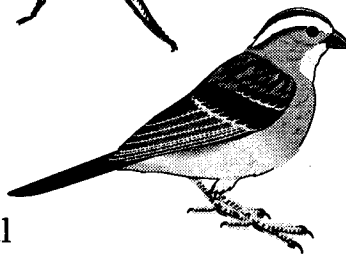
A spider



An insect



A bird



The sap from a tree

Moss



The home of an animal

